

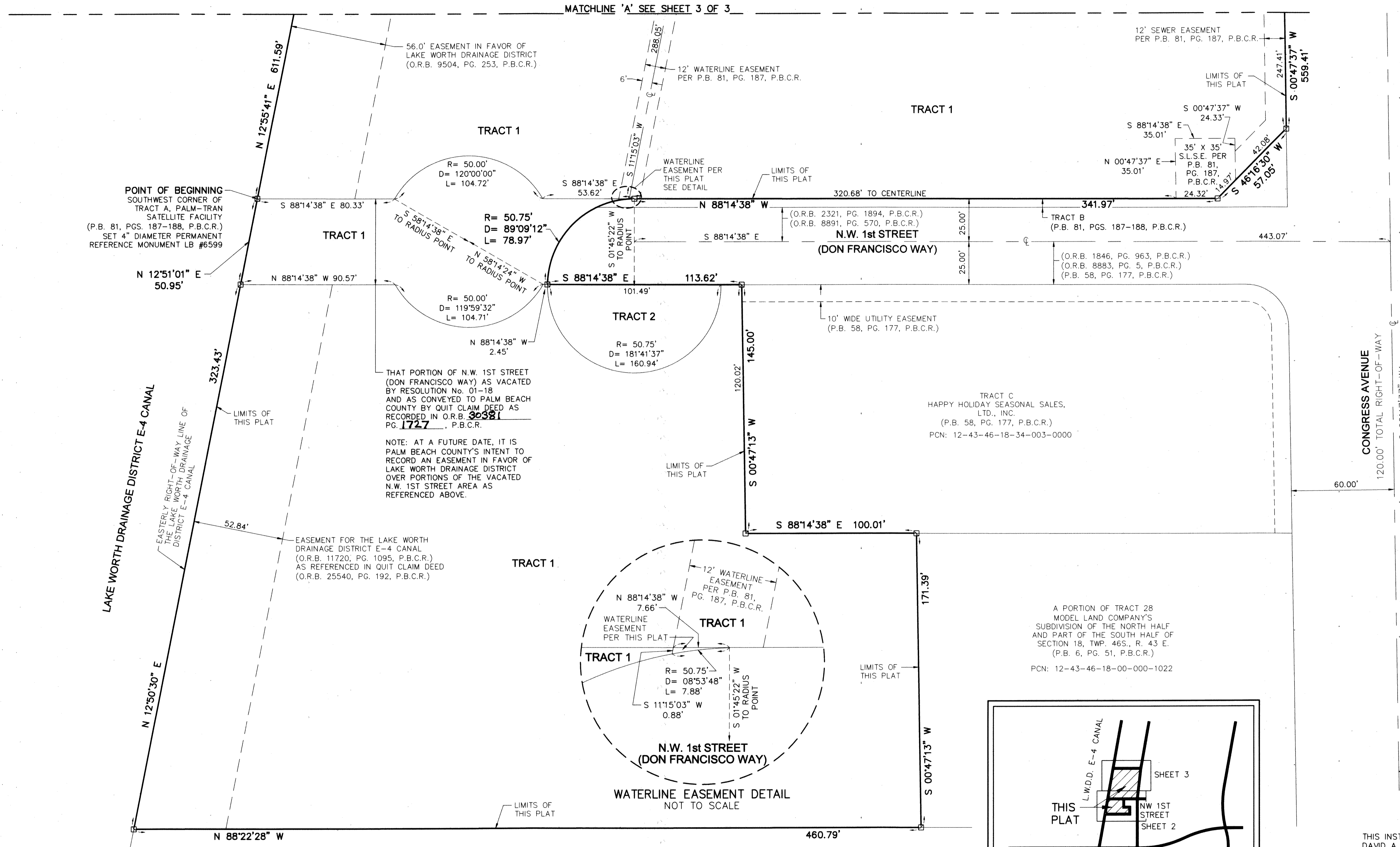
PALM TRAN SOUTH COUNTY FACILITY

BEING A RE-PLAT OF A PORTION OF TRACT 28, MODEL LAND COMPANY'S SUBDIVISION OF THE NORTH HALF AND PART OF THE SOUTH HALF OF SECTION 18, TOWNSHIP 46 SOUTH, RANGE 43 EAST AS RECORDED IN PLAT BOOK 6, PAGE 51 OF THE PUBLIC RECORDS OF PALM BEACH COUNTY, FLORIDA. TOGETHER WITH A RE-PLAT OF TRACT A AND A PORTION OF TRACT B, PALM-TRAN SATELLITE FACILITY AS RECORDED IN PLAT BOOK 81, PAGE 187 OF THE PUBLIC RECORDS OF PALM BEACH COUNTY, FLORIDA. SITUATE IN SECTION 18, TOWNSHIP 46 SOUTH, RANGE 43 EAST, CITY OF DELRAY BEACH, PALM BEACH COUNTY, FLORIDA.

SHEET 2 OF 3

195
STATE OF FLORIDA) S.S.
COUNTY OF PALM BEACH)

THIS INSTRUMENT WAS FILED FOR RECORD AT _____ M. THIS _____ DAY OF _____ 20____ AND DULY RECORDED IN: PLAT BOOK _____ ON PAGE _____ SHARON R. BOCK CLERK & COMPTROLLER PALM BEACH COUNTY BY: _____ DEPUTY CLERK



POINT OF BEGINNING
SOUTHWEST CORNER OF
TRACT A, PALM-TRAN
SATELLITE FACILITY
(P.B. 81, PGS. 187-188, P.B.C.R.)
SET 4" DIAMETER PERMANENT
REFERENCE MONUMENT LB #6599

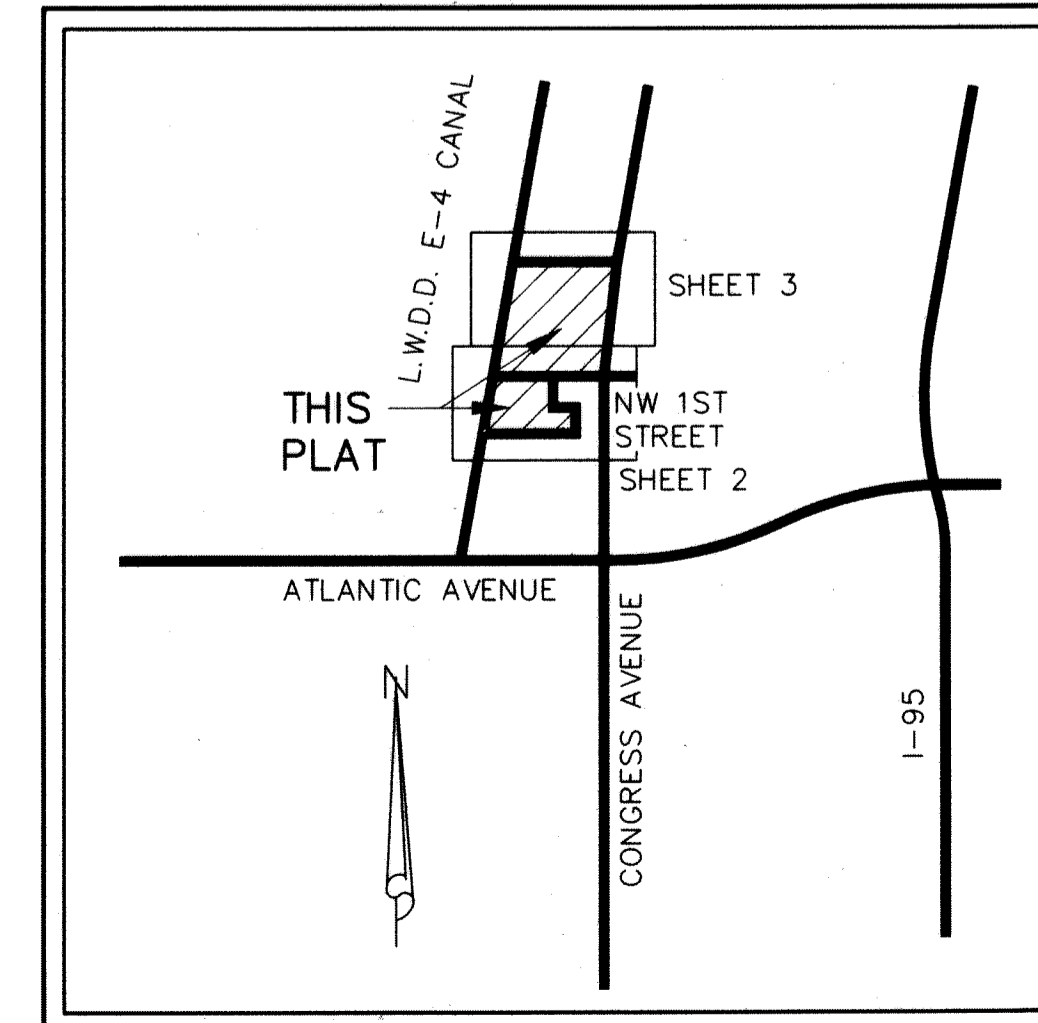
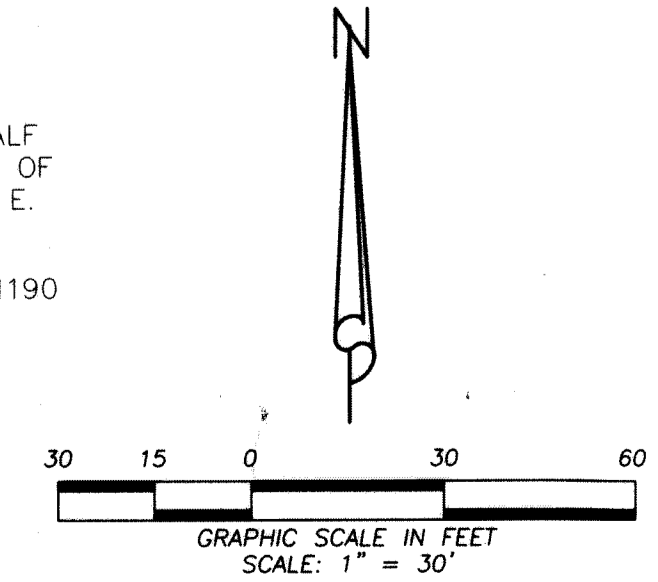
NOTE: AT A FUTURE DATE, IT IS
PALM BEACH COUNTY'S INTENT TO
RECORD AN EASEMENT IN FAVOR OF
LAKE WORTH DRAINAGE DISTRICT
OVER PORTIONS OF THE VACATED
N.W. 1ST STREET AREA AS
REFERENCED ABOVE.

TRACT C
HAPPY HOLIDAY SEASONAL SALES,
LTD., INC.
(P.B. 58, PG. 177, P.B.C.R.)
PCN: 12-43-46-18-34-003-0000

A PORTION OF TRACT 28
MODEL LAND COMPANY'S
SUBDIVISION OF THE NORTH HALF
AND PART OF THE SOUTH HALF OF
SECTION 18, TWP. 46S., R. 43 E.
(P.B. 6, PG. 51, P.B.C.R.)
PCN: 12-43-46-18-00-000-1022

A PORTION OF TRACT 27
MODEL LAND COMPANY'S
SUBDIVISION OF THE NORTH HALF
AND PART OF THE SOUTH HALF OF
SECTION 18, TWP. 46S., R. 43 E.
(P.B. 6, PG. 51, P.B.C.R.)
PCN: 12-43-46-18-00-000-1190

- LEGEND**
- D = CENTRAL ANGLE
 - L = ARC LENGTH
 - LB = LICENSED BUSINESS
 - O.R.B. = OFFICIAL RECORD BOOK
 - P.B. = PLAT BOOK
 - P.B.C. = PALM BEACH COUNTY
 - P.B.C.R. = PALM BEACH COUNTY RECORDS
 - ☉ = CENTERLINE
 - P.C.N. = PARCEL CONTROL NUMBER
 - PG. = PAGE(S)
 - P.R.M. = PERMANENT REFERENCE MONUMENT
 - R = RADIUS
 - S.L.S.E. = SEWER LIFT STATION EASEMENT
 - U.E. = UTILITY EASEMENT
 - ☐ = PERMANENT REFERENCE MONUMENT (P.R.M.)
4" DIAMETER CONCRETE MONUMENT WITH P.K.
NAIL IN BRASS DISC STAMPED "PRM LB 6599"



THIS INSTRUMENT WAS PREPARED BY:
DAVID A. BOWER, P.S.M. #5888 IN THE OFFICES
OF DENNIS J. LEAVY AND ASSOCIATES, INC.
CERTIFICATE OF AUTHORIZATION NUMBER: LB6599
460 BUSINESS PARK WAY, SUITE B
ROYAL PALM BEACH, FLORIDA 33411
PHONE: (561) 753 - 0650
FAX: (561) 753 - 0290

DENNIS J. LEAVY & ASSOCIATES, INC.
LAND SURVEYORS AND MAPPERS

460 BUSINESS PARK WAY • SUITE B • ROYAL PALM BEACH, FL • 33411
PHONE: (561) 753-0650 FAX: (561) 753-0290

SCALE: AS SHOWN	CHECKED BY: RMM	DATE: 04/05/17
DRAWN BY: DAB	JOB NO.: 15-024-001	